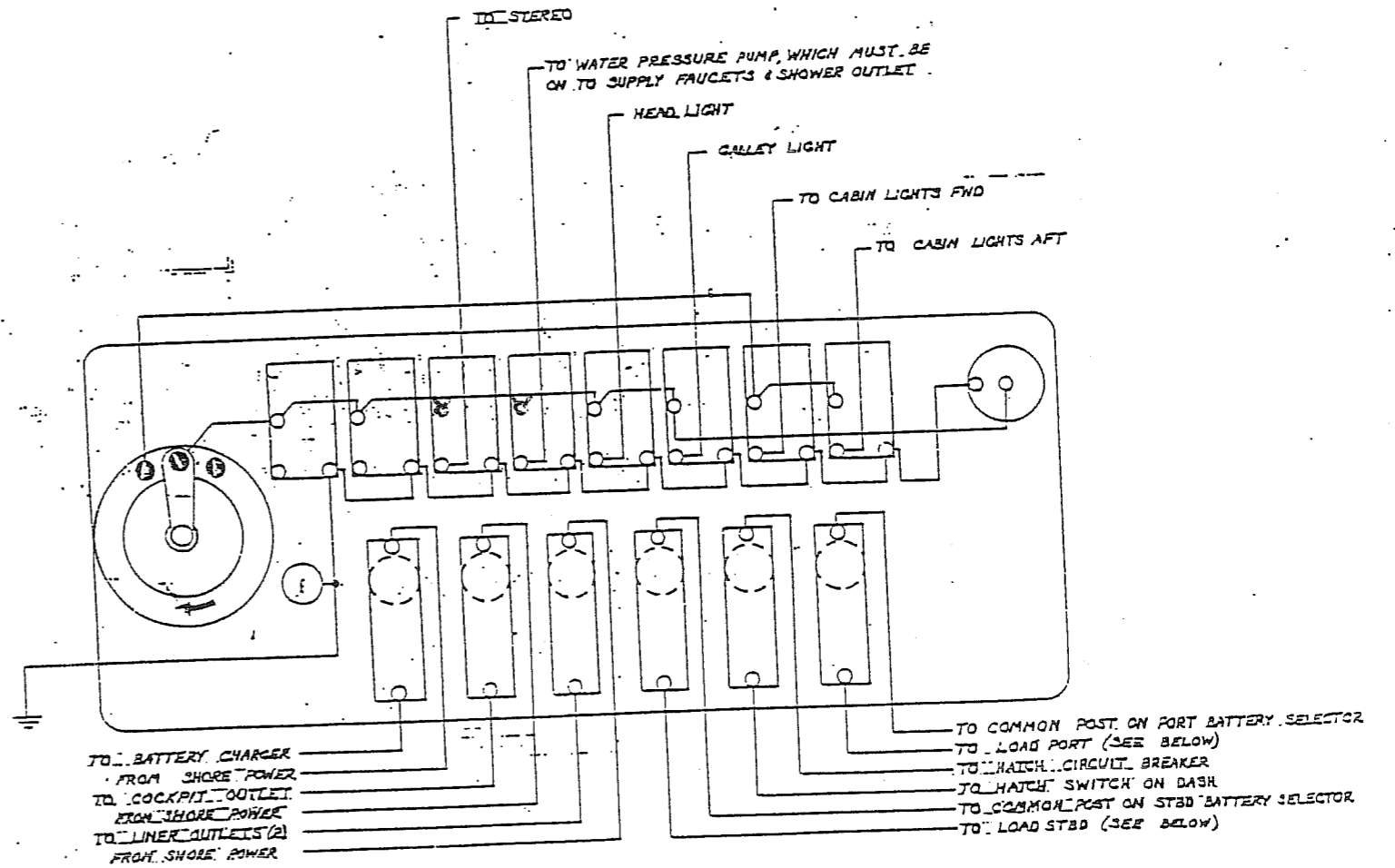
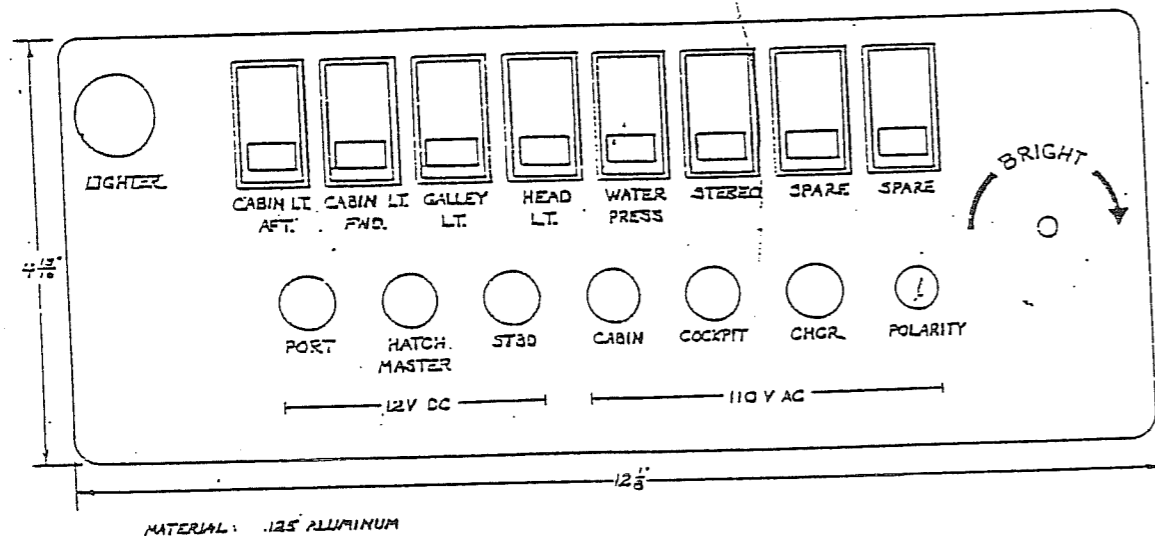


FOR REPAIRS & SERVICE...
 31' CIGARETTE PACING TEAM
 3131 N.E. 15TH ST.
 NORTH MIAMI BEACH, FL 33180.
ELECTRICAL SCHEMATIC
 DATE: 8-26-87 DRAWN BY: JAM DWG. NO. 0011
 SCALE: CHECKED BY: FILE:



LOADS ON PORT
 FUEL PUMP PORT ENGINE
 BILGE PUMP #1
 ENGINE ROOM BLOWER / HORN
 TOILET SUPPLY PUMP / MACERATOR
 ANCHOR LIGHT / NAV.
 ENGINE ROOM LIGHT
 TRIM TAB PORT
 OUTDRIVE PORT

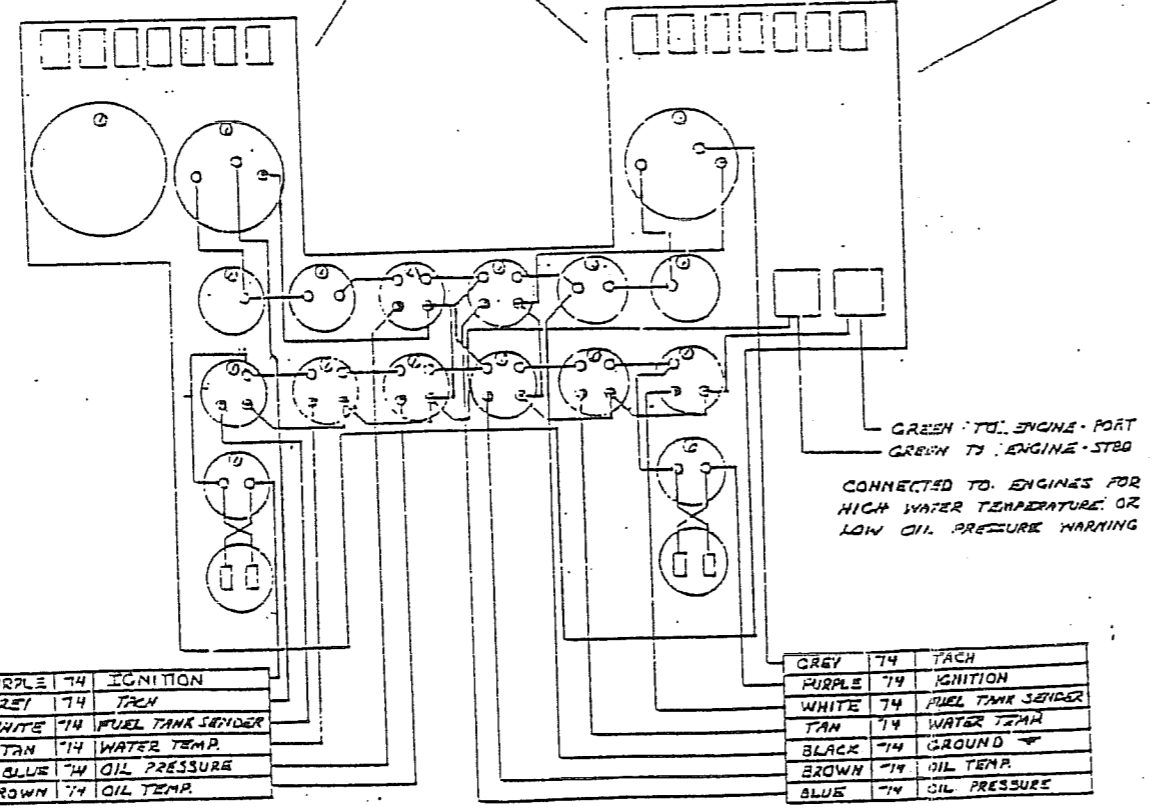
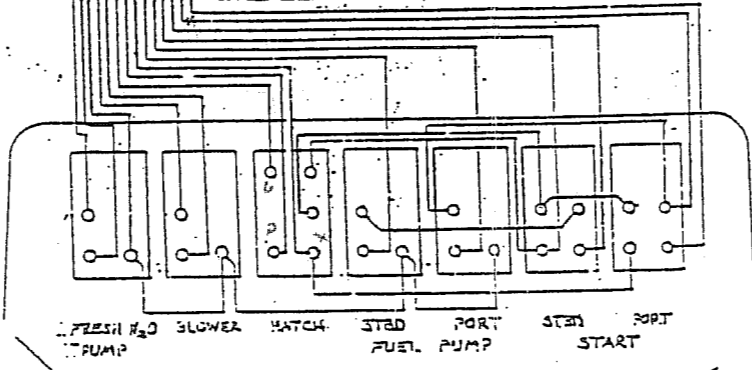
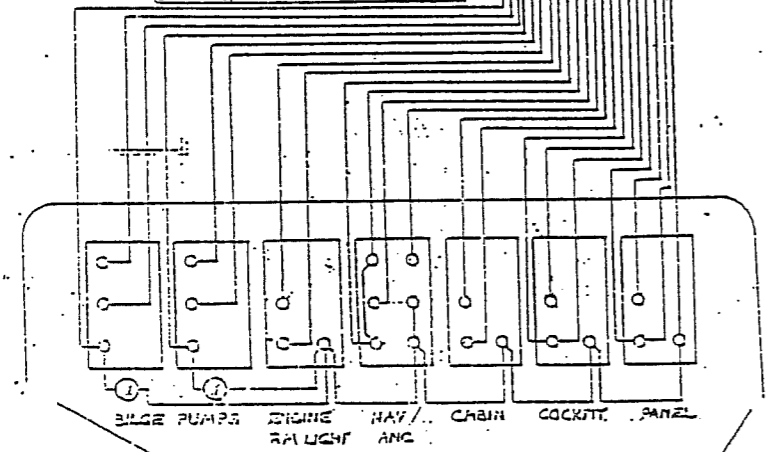
LOADS ON STBD
 FUEL PUMP STBD ENGINE
 BILGE PUMP #2
 GAS SHIFFER
 MERCATHODE SYSTEM
 HALON SYSTEM
 STEREO
 WATER SYSTEM
 TRIM TAB STBD
 OUTDRIVE STBD

THIS SHIPBOARD & SHORE CONNECTIONS ARE THE PROPERTY OF CIGARETTE RACING TEAM, INC. & MAY BE REPRODUCED OR TRANSMITTED IN ANY FORM OR BY ANY MEANS WITHOUT THE WRITTEN PERMISSION OF CIGARETTE RACING TEAM, INC.

CIGARETTE RACING TEAM
 3131 N.E. 184TH ST.
 NORTH MIAMI BEACH, FL 33160
31 CIGARETTE BULLET
 FORWARD ELECTRICAL PANEL

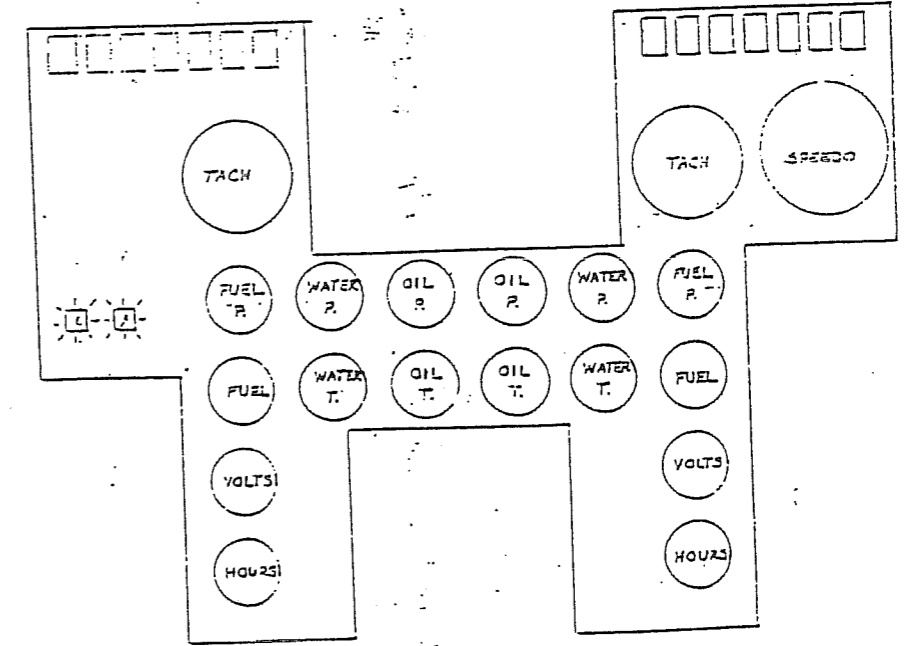
| | | |
|-------|----|------------------|
| BLACK | 12 | GROUND + |
| BLUE | 14 | PANEL LT. |
| RED | 14 | PANEL LT. |
| BLUE | 14 | PANEL LT. |
| WHITE | 14 | COCKPIT LT. |
| RED | 14 | COCKPIT LT. |
| WHITE | 14 | COCKPIT LT. |
| WHITE | 14 | CABIN LT. |
| RED | 14 | CABIN LT. |
| BLACK | 12 | ANCHOR LT. + |
| RED | 14 | NAV. LT. + |
| WHITE | 12 | ANCHOR LT. |
| WHITE | 14 | NAV. LT. |
| WHITE | 14 | ENGINE RM. LT. |
| RED | 14 | ENGINE RM. LT. + |
| RED | 10 | BILGE PUMP + |
| GREEN | 12 | BILGE PUMP AUTO. |
| WHITE | 12 | BILGE PUMP MAN. |
| RED | 10 | BILGE PUMP + |
| GREEN | 12 | BILGE PUMP AUTO. |
| WHITE | 12 | BILGE PUMP MAN. |

| | | |
|--------|----|-------------------|
| RED | 14 | WATER PUMP + |
| WHITE | 14 | WATER PUMP + |
| BLACK | 12 | GROUND + |
| RED | 12 | ENG. RM. BLOWER + |
| WHITE | 10 | ENG. RM. BLOWER + |
| BLACK | 14 | HATCH UP |
| WHITE | 10 | HATCH DOWN |
| ORANGE | 14 | + |
| BLACK | 12 | FUEL PUMP |
| BLACK | 12 | FUEL PUMP |
| ORANGE | 14 | + |
| YELLOW | 14 | START STBD |
| PURPLE | 14 | IGNITION PORT |
| YELLOW | 14 | START PORT |



| | | |
|--------|----|------------------|
| PURPLE | 14 | IGNITION |
| GREY | 14 | TACH |
| WHITE | 14 | FUEL TANK SENDER |
| TAN | 14 | WATER TEMP. |
| BLUE | 14 | OIL PRESSURE |
| BROWN | 14 | OIL TEMP. |

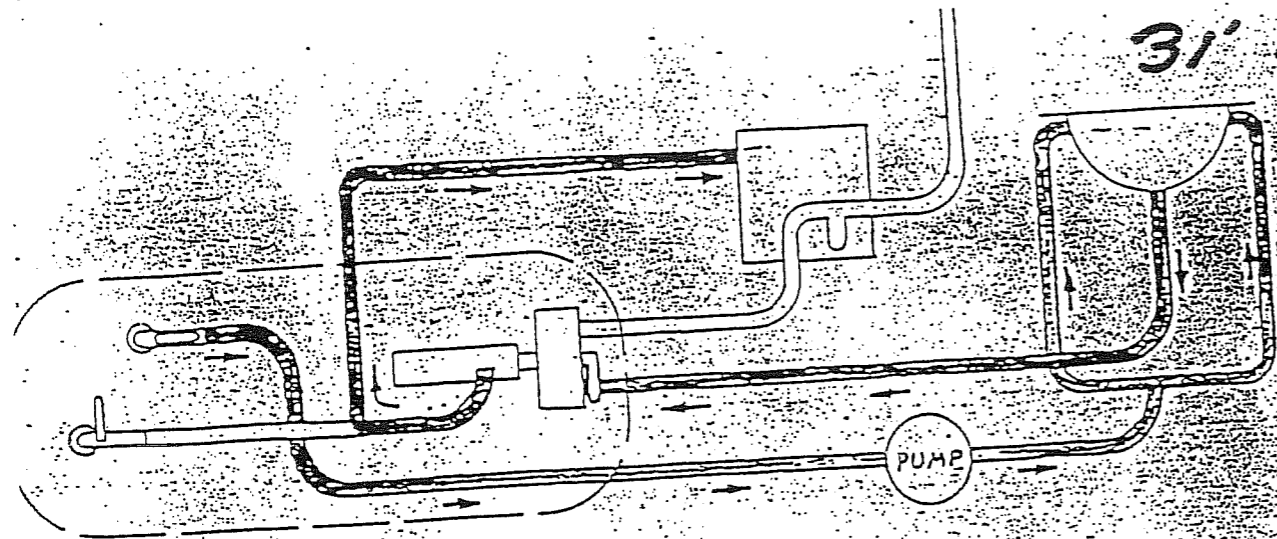
| | | |
|--------|----|------------------|
| GREY | 14 | TACH |
| PURPLE | 14 | IGNITION |
| WHITE | 14 | FUEL TANK SENDER |
| TAN | 14 | WATER TEMP. |
| BLACK | 14 | GROUND + |
| BROWN | 14 | OIL TEMP. |
| BLUE | 14 | OIL PRESSURE |



GAUGE IDENTIFICATION
P - PRESSURE PSI
T - TEMPERATURE F

CIGARETTE RACING TEAM
3150 KENNEDY BLVD
MORRISVILLE, N.C. 27560
CIGARETTE BULLET

31' Bullet Head Diagram

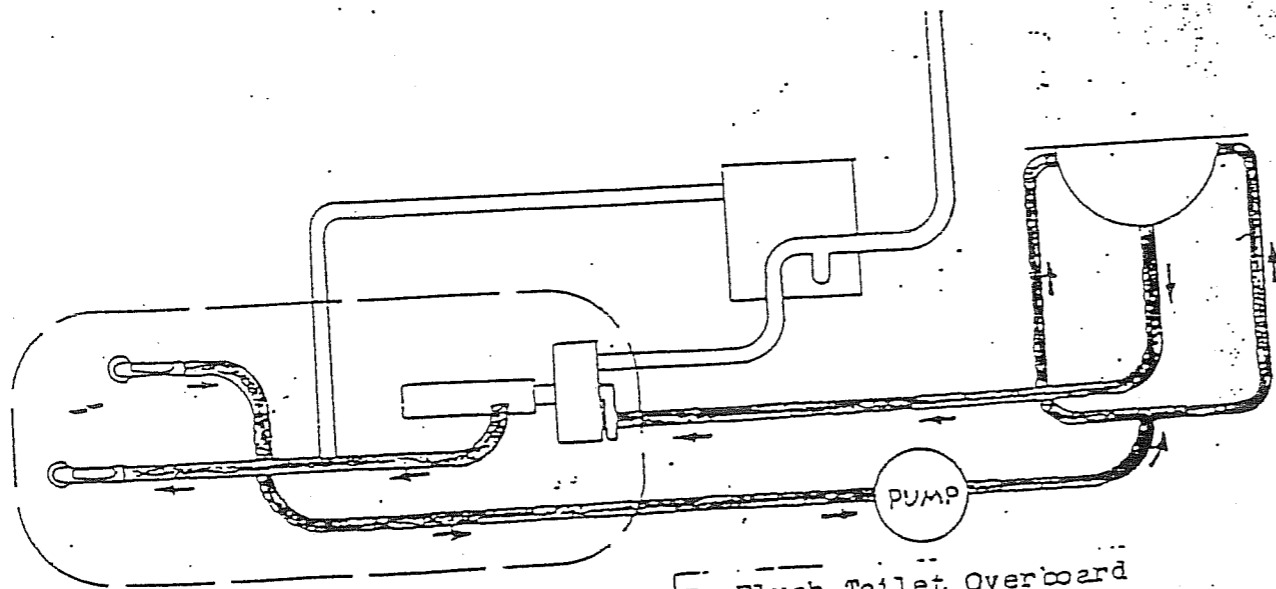


To Flush Waste Into Tank

- 1) Open small Seacock.
- 2) Close Large Seacock.
- 3) Position Y-valve Handle To Inboard.
- 4) Press Both Grey Buttons.

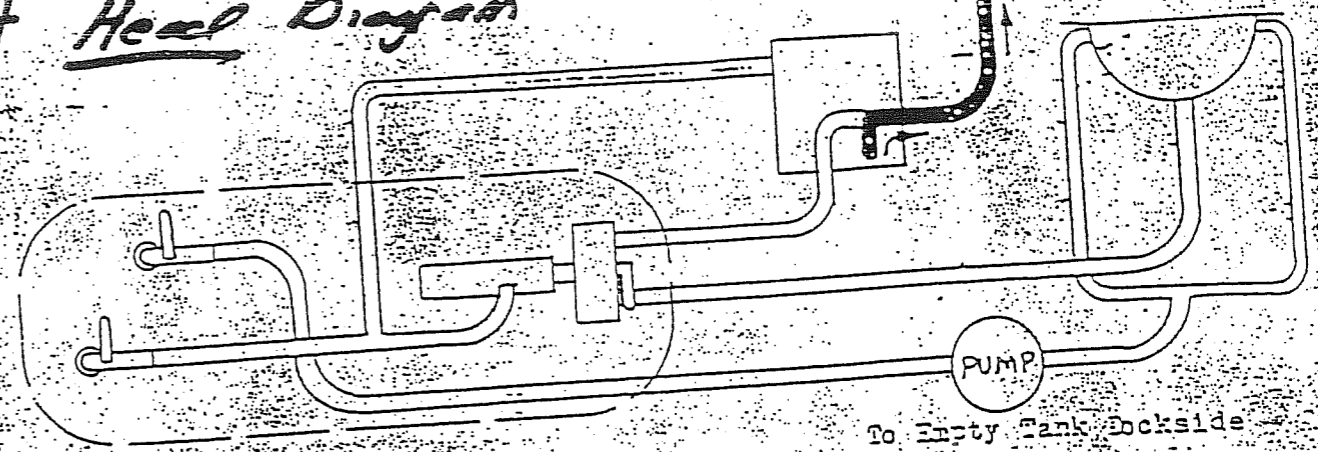
WARNING

Pressing Grey Buttons For More Than One Minute Can Cause Damage To Pumps.



To Flush Toilet Overboard

- 1) Open Both Seacocks.
- 2) Position Y-valve Handle To Inboard.
- 3) Press Both Grey Buttons.



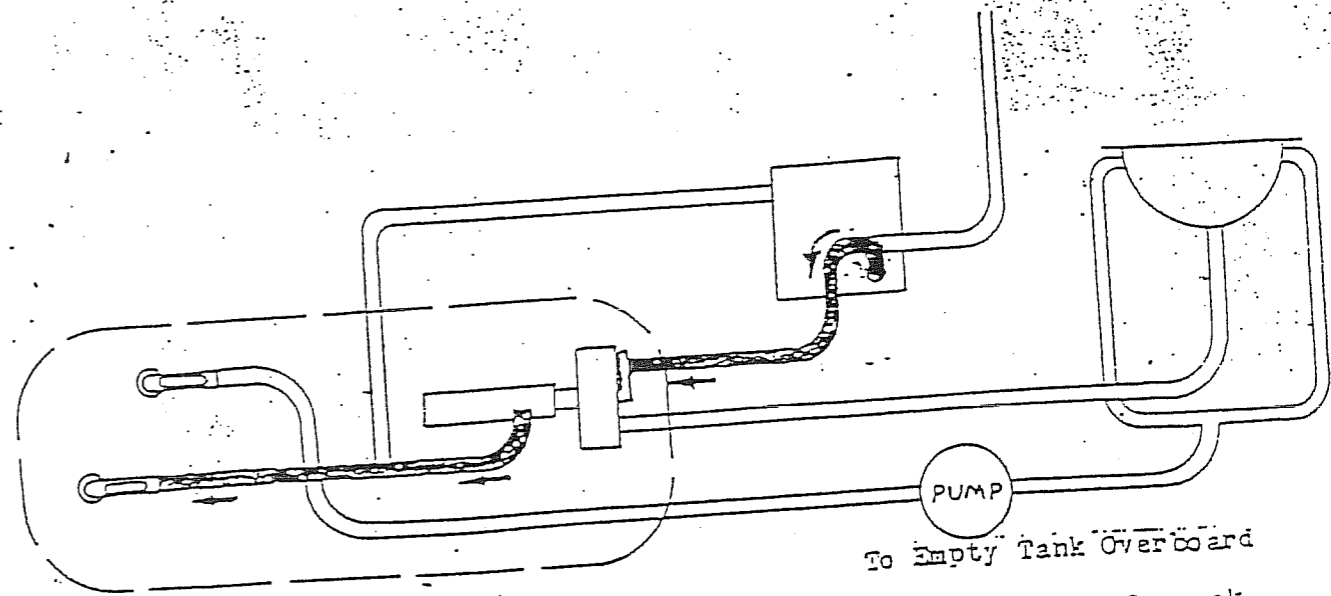
To Empty Tank Backside

- 1) Close Both Seacocks.
- 2) Position Y-valve Handle To Inboard.

WARNING

It Is Illegal To Discharge Waste Within 5 Miles Of Land.

- 3) Connect Shoreside Vacuum To Waste Deck Fill On Starboard Side Of Deck.



To Empty Tank Overboard

- 1) Open Large Seacock.
- 2) Close small Seacock.
- 3) Position Y-valve Handle To Outboard.
- 4) Press Lower Grey Button.